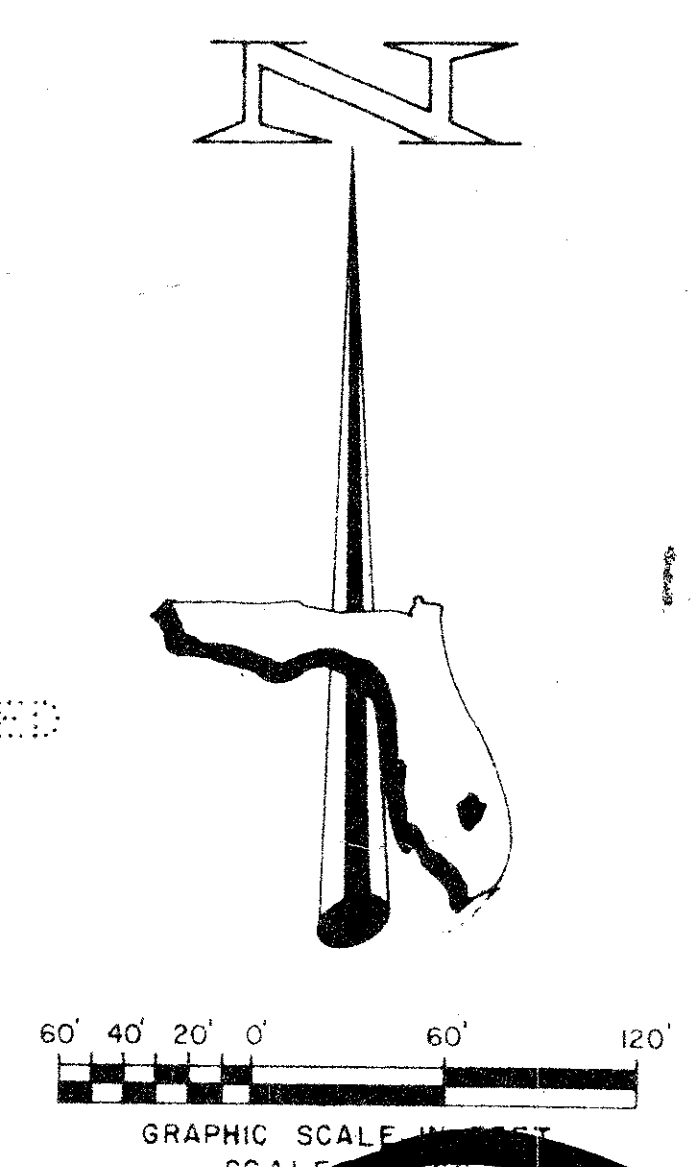
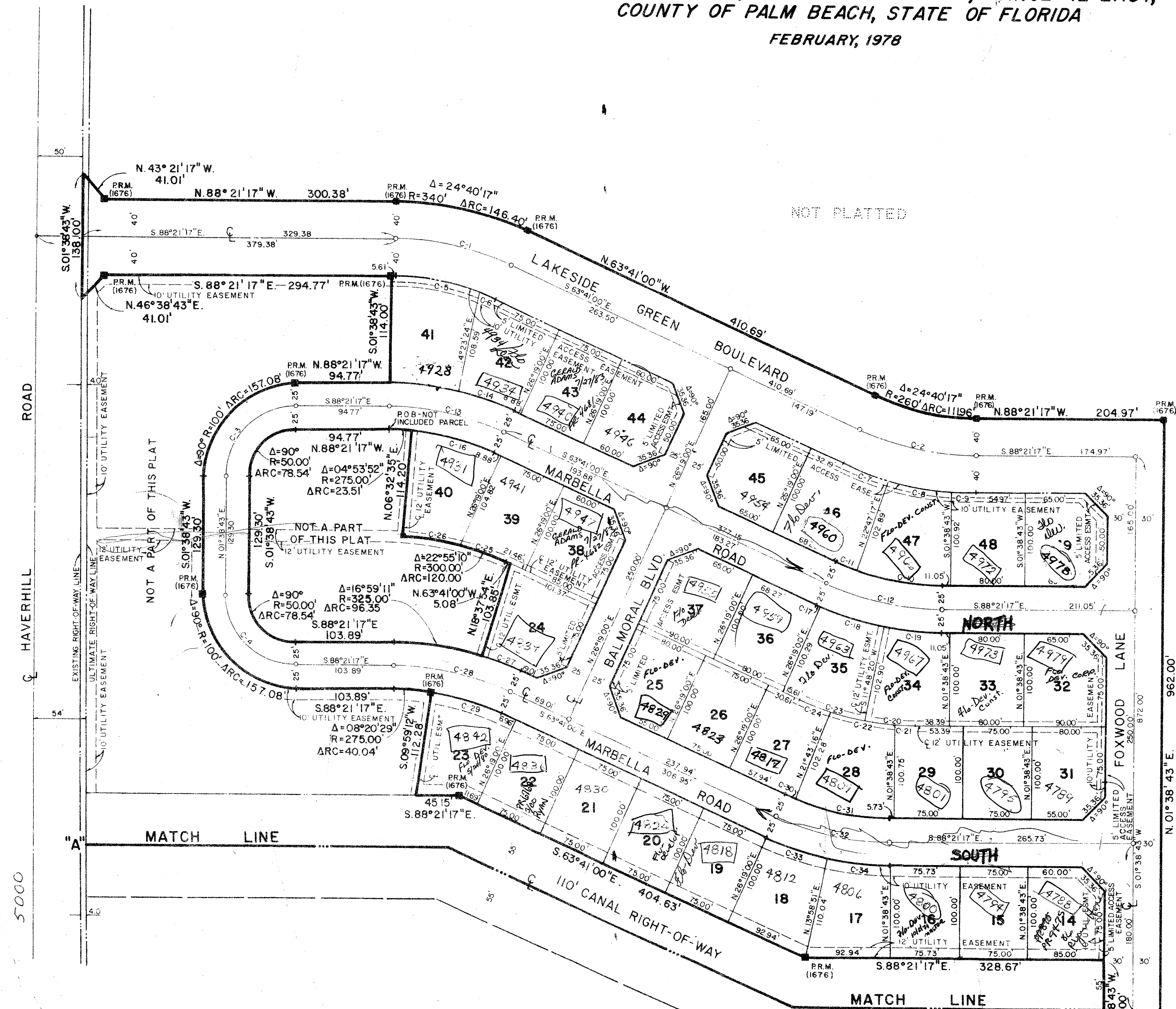


FOXWOOD ESTATES PLAT No. 1

OF LAKESIDE GREEN (P.U.D.)
 LYING IN SECTION 13, TOWNSHIP 43 SOUTH, RANGE 42 EAST,
 COUNTY OF PALM BEACH, STATE OF FLORIDA

FEBRUARY, 1978

79



30

13/43/42
 0265-312
 34
 79

NOTE SEE SHEET 3 OF 3 FOR CURVE DATA.

THIS INSTRUMENT WAS PREPARED BY GEORGE C. PANOS P.L.S. IN THE OFFICES OF FLORIDA SURVEYING AND MAPPING 941 N. MILITARY TRAIL, WEST PALM BEACH, FLORIDA 33406

SHEET 2 OF 3

FLORIDA SURVEYING & MAPPING, INC.			
REGISTERED LAND SURVEYORS			
WEST PALM BEACH, FLORIDA 33401			
SCALE	DATE	REVISIONS	BY
1" = 60'	FEB 1978		
	Shane		J.P.
	Chm. Boat		
FOXWOOD ESTATES			177-162

FOXWOOD ESTATES SHEET 3 OF 3
FOXWOOD ESTATES #1